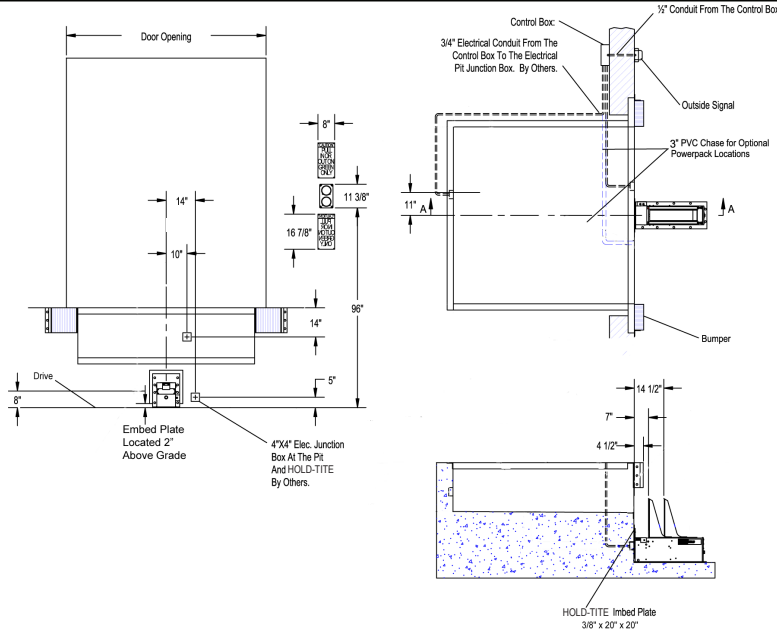


#### HOLD-TITE Overview



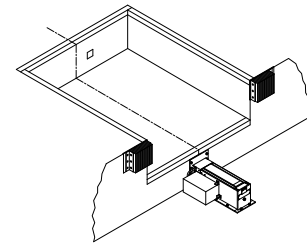
For comprehensive installation instructions of the HOLD-TITE read and understand the Installation and Operation Manual.

#### Powerpack Location Options

Coordinate powerpack location and hose length for proper placement.

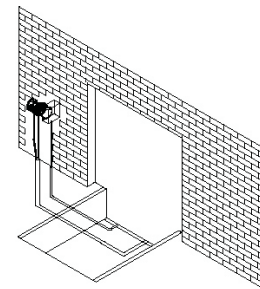
##### Dock Face (Self Contained)

Appropriate location when the likelihood of flooding, snow removal and damage from trailer/trucks is minimal. Also recommended for use with non-hydraulically powered dock levelers.

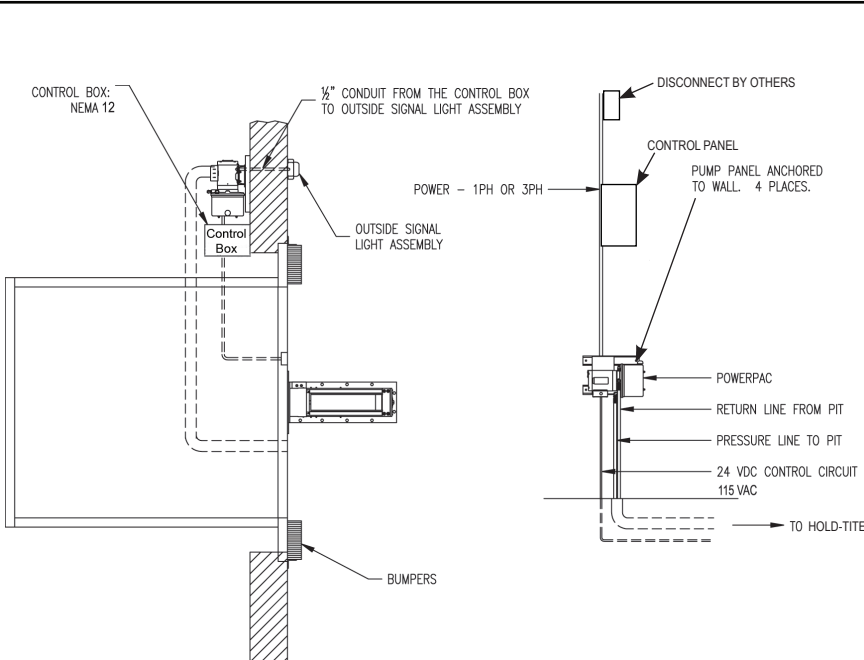


##### Inside Building (Remote Mount)

Locate powerpack to minimize obstruction potential. Hydraulic and electrical lines from the Powerpack to the restraint are best placed through min. 3" PVC (hydraulic) and 3/4" (electrical) chase during pit construction.



#### HOLD-TITE Remote Mount Powerpack





A Division of Systems, LLC

# HOLD-TITE SERIES

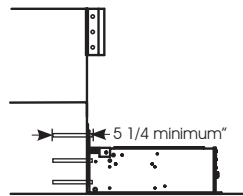
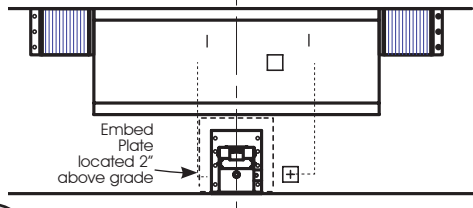
## INSTALLATION OVERVIEW

### AUTOMATIC VEHICLE RESTRAINT

#### Concrete Dock Face (Standard Installation)

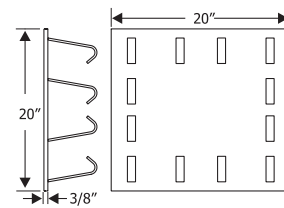
##### Wedge Anchors Method

Using back plate as a guide, drill six (6) holes for wedge anchors (3/4" x 5 1/4" min.) (Kit #2103-0005)



##### Wall Embed Method

Weld three sides of HOLD-TITE back plate to the optional embed mounting plate (Part #7953-0119) with continuous 1/4" fillet weld.



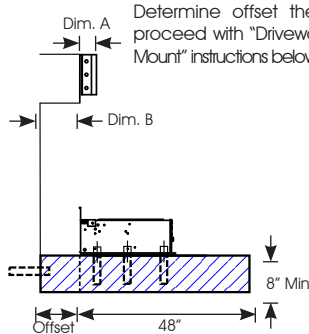
#### Cantilevered Dock (For bumper projection >4" or cantilevered dock or Edge-of-Dock leveler)

To determine size offset required, take total effective bumper projection (bumper size plus any cantilever) and subtract 4".

Offset Formula			
Dim. A Bumper Projection	Dim. B Cantilever		Offset
4"	+ Dim B	-4"	= Offset
6"	+ Dim B		
10"	+ Dim B		
15"	+ Dim B		

##### Driveway Mount

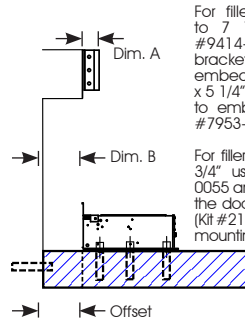
Determine offset then proceed with "Driveway Mount" instructions below.



##### Wall Mount

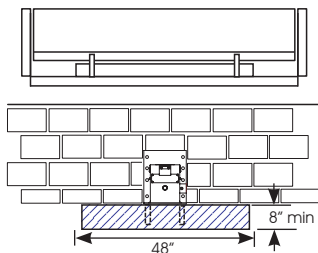
For filler requirements from 1 1/2" to 7 1/2" use cantilever bracket #9414-0054 and anchor cantilever bracket to the dock face or weld to embedded mounting plate (3/4" Dia. x 5 1/4" min.) (Kit #2103-0004) or weld to embedded mounting plate (Part #7953-0119).

For filler requirements for 8 3/4" to 13 3/4" use cantilever bracket #9414-0055 and anchor cantilever bracket to the dock face (3/4" Dia. x 5 1/4" min.) (Kit #2103-0004) or weld to embedded mounting plate (Part #7953-0119).



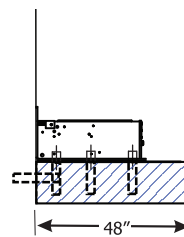
#### Driveway Mount (Recommended when dock face is unsuitable for HOLD-TITE Mounting)

Driveway mount requires attachment to a concrete drive greater than 8" thick. For asphalt drive, pour 48" x 48" x 8" (min.) concrete pad and include six (6) 3/4" dowels into foundation wall. Then proceed with adhesive anchors or weld plate embed.



##### Drive Anchors Method (Kit #2103-0003)

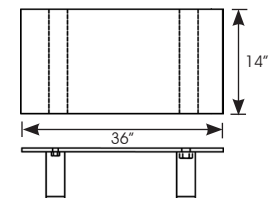
Install six (6) 3/4" Dia. x 5 1/4" min. wedge anchors at the base of the HOLD-TITE.



##### Drive Embed Method

###### Weld Method

Properly locate and level the drive embed weld plate (Part #7953-0132) in the drive approach. Observe Cantilever conditions for proper positioning. Weld restraint to embed plate with a continuous 1/4" fillet weld.



Consistent with our policy of continuing product improvement, we reserve the right to change product specifications without notice or obligation.

A continuing product improvement is in effect at Systems, LLC. We reserve the right to make product changes without prior notice.  
McGuire • Division of Systems, LLC • Phone: 800-624-8473 • Email: sales@wbmcguire.com • www.wbmcguire.com

# VEHICLE RESTRAINT