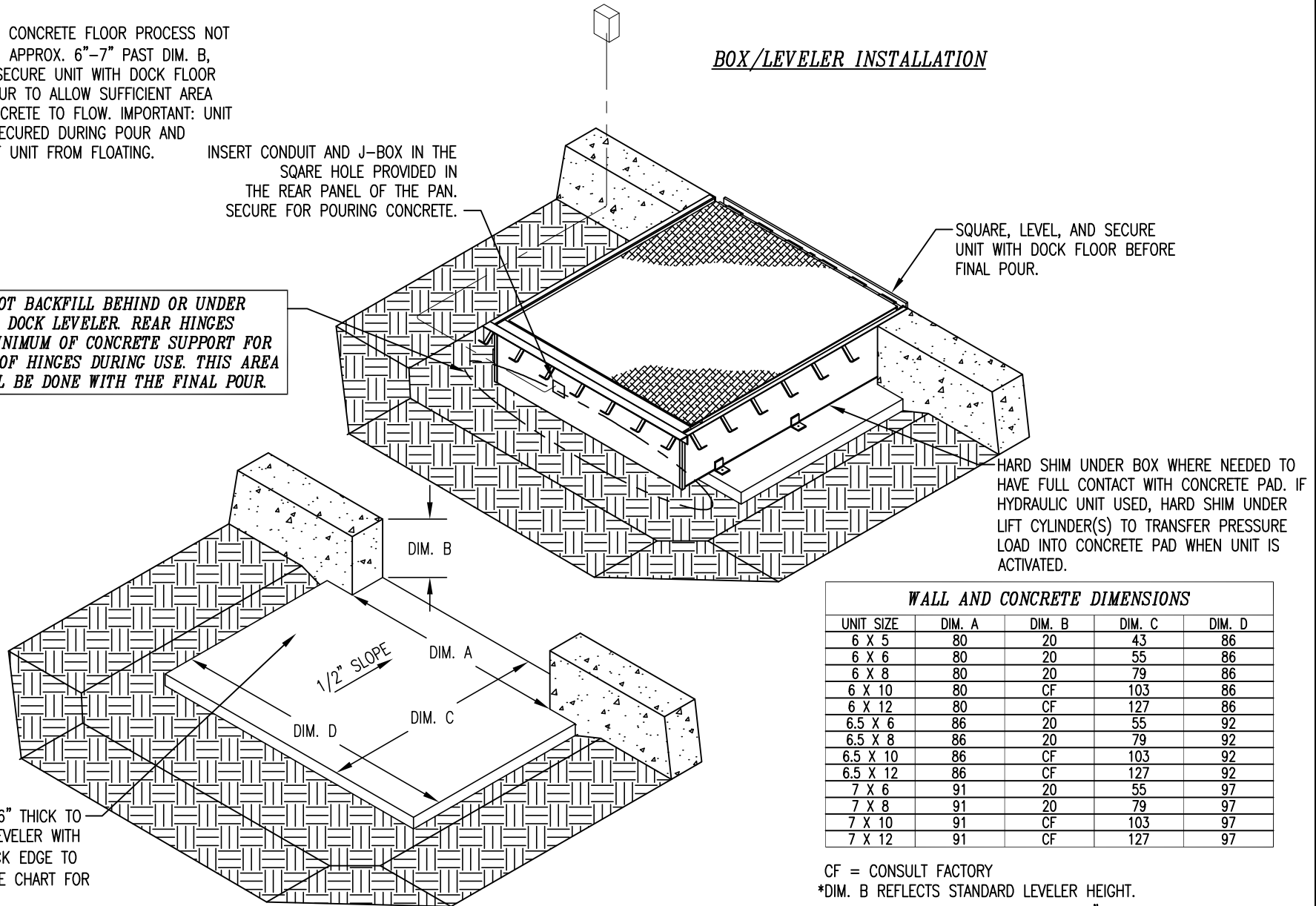


NOTE: IF PRE-POURED CONCRETE FLOOR PROCESS NOT USED, EXCAVATE DOWN APPROX. 6"-7" PAST DIM. B, SQUARE, LEVEL, AND SECURE UNIT WITH DOCK FLOOR BEFORE CONCRETE POUR TO ALLOW SUFFICIENT AREA UNDERNEATH FOR CONCRETE TO FLOW. IMPORTANT: UNIT MUST BE PROPERLY SECURED DURING POUR AND VIBRATING TO PREVENT UNIT FROM FLOATING.

INSERT CONDUIT AND J-BOX IN THE SQUARE HOLE PROVIDED IN THE REAR PANEL OF THE PAN. SECURE FOR POURING CONCRETE.

IMPORTANT: DO NOT BACKFILL BEHIND OR UNDER REAR SECTION OF DOCK LEVELER. REAR HINGES MUST HAVE 6" MINIMUM OF CONCRETE SUPPORT FOR PROPER LOADING OF HINGES DURING USE. THIS AREA OF CONCRETE WILL BE DONE WITH THE FINAL POUR.

BOX/LEVELER INSTALLATION



SQUARE, LEVEL, AND SECURE UNIT WITH DOCK FLOOR BEFORE FINAL POUR.

HARD SHIM UNDER BOX WHERE NEEDED TO HAVE FULL CONTACT WITH CONCRETE PAD. IF HYDRAULIC UNIT USED, HARD SHIM UNDER LIFT CYLINDER(S) TO TRANSFER PRESSURE LOAD INTO CONCRETE PAD WHEN UNIT IS ACTIVATED.

WALL AND CONCRETE DIMENSIONS

UNIT SIZE	DIM. A	DIM. B	DIM. C	DIM. D
6 X 5	80	20	43	86
6 X 6	80	20	55	86
6 X 8	80	20	79	86
6 X 10	80	CF	103	86
6 X 12	80	CF	127	86
6.5 X 6	86	20	55	92
6.5 X 8	86	20	79	92
6.5 X 10	86	CF	103	92
6.5 X 12	86	CF	127	92
7 X 6	91	20	55	97
7 X 8	91	20	79	97
7 X 10	91	CF	103	97
7 X 12	91	CF	127	97

CF = CONSULT FACTORY

*DIM. B REFLECTS STANDARD LEVELER HEIGHT.

IF TALL FRAME IS USED, DIM. B IS 24".

POUR CONCRETE PAD 6" THICK TO SUPPORT THE DOCK LEVELER WITH 1/2" SLOPE FROM BACK EDGE TO FOUNDATION WALL. (SEE CHART FOR DIMENSIONS)